



Morris Goding
Access Consulting

Liverpool City Council

Liverpool Civic Place

**Access Review –
Final**

6th October 2020



REPORT REVISIONS		
Date	Version	Drawing No / Revision
09.06.20	Draft	MP-100 - 107 Prepared by FJMT
02.09.20	Final	SD-AR-20B5 revision E, 20B4 revision E, 20B3 revision E, 20B2 revision E, 20B1 revision E, 20LG revision E, 20UG revision E, 2001-2008 revision E, 2012 revision E and 2014 revision E issued 28/08/20.
07.09.20	Final Amended	N/A
22.09.20	Final Amended V2	N/A
28.09.20	Final Amended V3	N/A
06.10.20	Final Amended V4	N/A

This report prepared by:

A handwritten signature in black ink, appearing to read 'Leuzzi'.

Anthony Leuzzi
Associate Director
Morris Goding Accessibility Consulting



Table of contents

1.	Executive Summary	4
2.	Introduction	5
2.1	Background	5
3.	Site Analysis	7
3.1	Site Location and Context	7
3.2	Objectives	8
3.3	Limitations	8
3.4	Accessibility of Design	8
3.5	Statutory Requirements	9
4.	General Access Planning Considerations	10
5.	Ingress & Egress	12
5.1	External Linkages	12
5.2	Entrances	12
5.3	Emergency Egress	13
6.	Paths of Travel	15
6.1	Circulation Areas	15
6.2	Passenger Lifts	15
6.3	Stairs & Ramps	16
7.	Facilities & Amenities	17
7.1	Sanitary Facilities	17
7.2	Common Areas	17
7.3	Car Parking	18
8.	Conclusion	19



1. Executive Summary

The Access Review Report is a key element in the design development of Liverpool Civic Place and an appropriate response to the AS1428 series, Building Code of Australia (BCA), DDA Access to Premises Standards (including DDA Access Code) and ultimately the Commonwealth Disability Discrimination Act (DDA).

Morris-Goding Accessibility Consulting has prepared the Access Report to provide advice and strategies to maximise reasonable provisions of access for people with disabilities.

The review will ensure that ingress and egress, paths of travel, circulation areas, and sanitary facilities comply with relevant statutory guidelines, and in addition, compliance with a higher level of accessibility and inclusiveness benchmarks set by the project.



2. Introduction

2.1 Background

This Final DA Amended V3 report submitted to Liverpool City Council (Council) on behalf of Built Development Group in support of a Stage 2 Development Application (DA) for Phase A of the Liverpool Civic Place development located at 52 Scott Street, Liverpool.

It follows the approval of a Concept Proposal / Stage 1 DA (DA-585/2019) for the broader Liverpool Civic Place master plan that has determined land uses, building envelopes, public domain and a multi-level common basement across the site. The full Liverpool Civic Place site, subject to the Concept Proposal / Stage 1 DA approval is illustrated at **Figure 1**, however the scope of this Stage 2 DA is limited to Phase A, as illustrated at **Figure 2**. Phase B and Phase C will be subject to future Stage 2 DA(s).



Figure 1 Liverpool Civic Master Plan Site

Source: FJMT

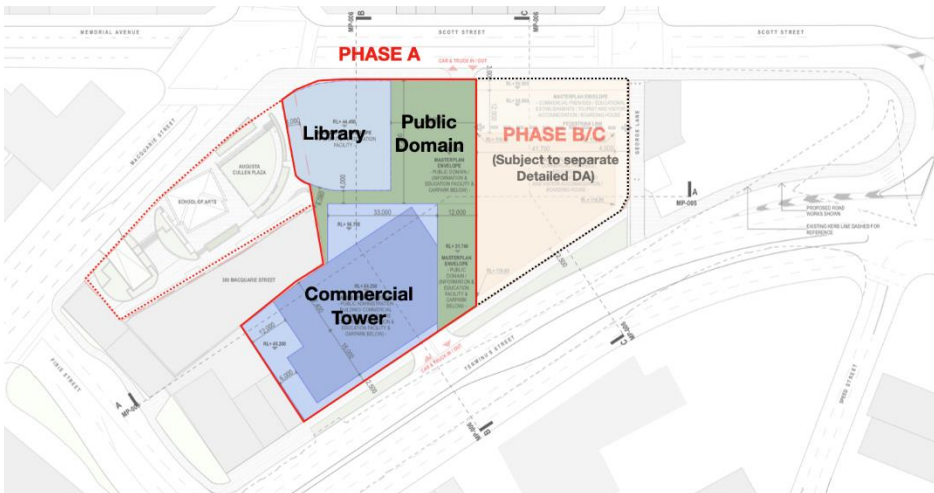


Figure 2 Liverpool Civic Place Stage 1 site (subject site)

Source: FJMT



This Stage 2 DA seeks approval for:

- Construction and use of a six (6) storey information and education facility (public library);
- Construction and use of a fourteen (14) storey mixed use building comprising:
 - Eight (8) storeys of public administration building floor space to be occupied by Liverpool City Council;
 - Four (4) storeys of commercial premises (office) floor space;
 - Single storey above ground child care centre on Level 6; and
 - Single storey of rooftop plant.
- Partial construction and use of the overall site's common basement;
- Landscaping and public domain works including:
 - an internal shared road connecting to Scott Street with basement access;
 - a public plaza fronting Scott Street; and
 - an elevated pocket park fronting Terminus Street.
- Extension and augmentation of services and infrastructure as required.

This DA reflects the staged planning approval pathway for the Liverpool Civic Place redevelopment which has included two previously approved DAs, as outlined below:

Concept DA DA-585/2019:

The planning approval pathway for the Liverpool Civic Place development commenced in 2019, with the submission of a Concept Proposal / Stage 1 DA for the Liverpool Civic Place master plan. On 31 August 2020, the Concept Proposal / Stage 1 DA (DA-585/2019) was approved by the Sydney Western City Planning Panel. The Concept Proposal / Stage 1 DA consent sets out the future development concept of the site, including the approved land uses, building envelopes, an expanse of public domain and a common basement. The Concept Proposal / Stage 1 DA did not approve any physical works.

Early Works DA DA-906/2019:

Development Application DA-906/2019 was approved by the Sydney Western City Planning Panel on 29 June 2020. The development consent relates to demolition of all structures, select tree removal and bulk earthworks including shoring through the use of piles. Early works commenced on site in September 2020 and are scheduled for completion in August 2021.



3. Site Analysis

3.1 Site Location and Context

The site is located at 52 Scott Street, Liverpool within the Liverpool City Council Local Government Area (LGA) as illustrated at **Figure 1**. The site is located at the southern fringe of the Liverpool CBD. The site is approximately 300m south west of the Liverpool Railway Station and is also in the vicinity of a number of regionally significant land uses and features including Liverpool Hospital, Westfield Liverpool, Western Sydney University Liverpool Campus, the Georges River and Biggie Park public open space as illustrated at **Figure 1**.

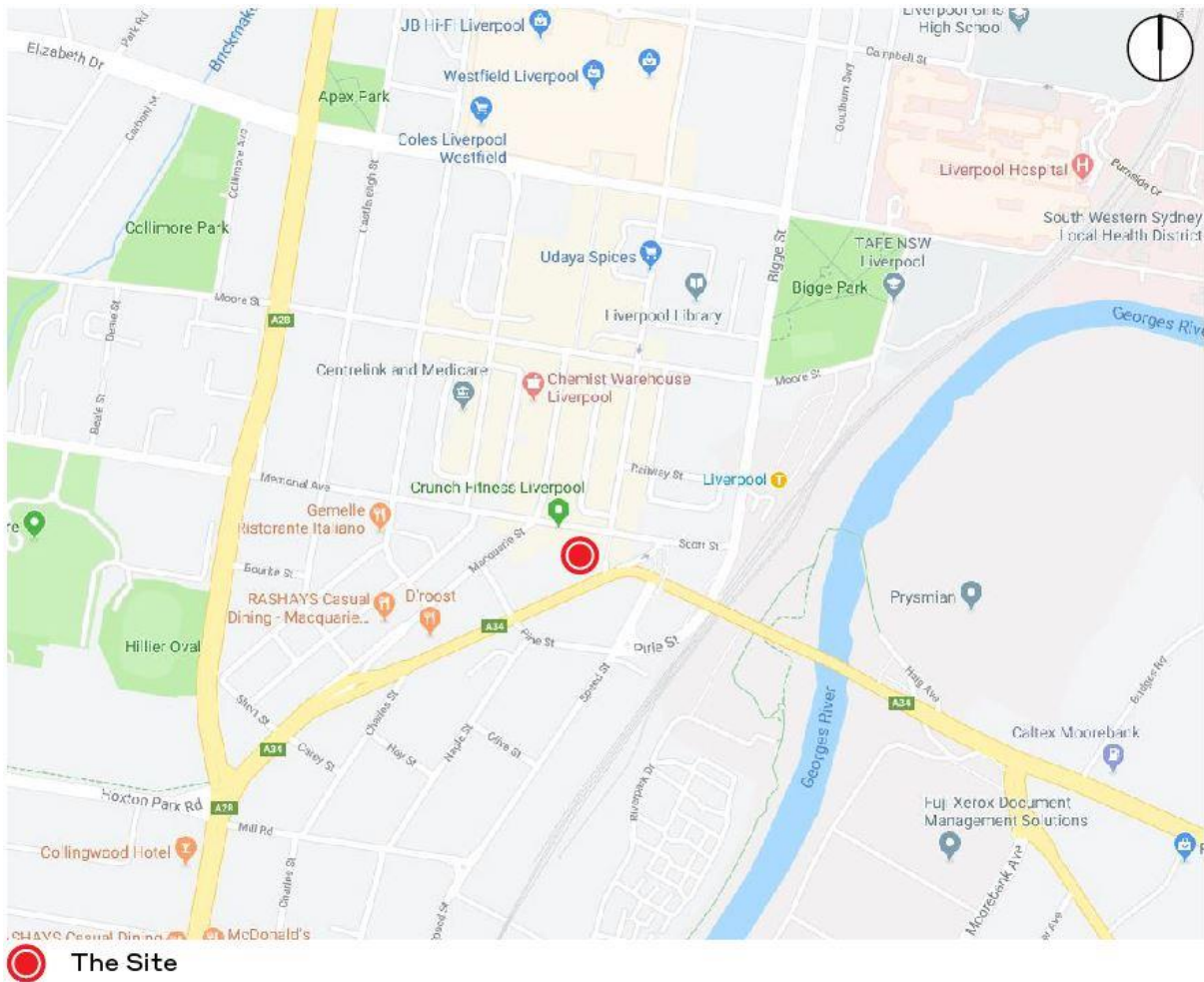


Figure 3 Site Location

Source: Google Maps & Ethos Urban



The requirements of the investigation are to:

- Review supplied drawings of the proposed development;
- Provide a report that will analyse the provisions of disability design of the development, and
- Recommend solutions that will ensure the design complies with the Disability Discrimination Act (DDA), Building Code of Australia (BCA), relevant Australian Standards, and enhanced benchmark requirements set by the project.

3.2 Objectives

The Report seeks to ensure compliance with statutory requirements and enhanced benchmark requirements set by the project. The Report considers user groups, who include students, staff, and members of the public. The Report attempts to deliver equality, independence and functionality to people with a disability inclusive of:

- People with a mobility impairment (ambulant and wheelchair);
- People with a sensory impairment (hearing and vision); and
- People with a dexterity impairment

The Report seeks to provide compliance the Disability Discrimination Act 1992. In doing so, the report attempts to eliminate, as far as possible, discrimination against persons on the ground of disability.

3.3 Limitations

This report is limited to the accessibility provisions of the building in general. It does not provide comment on detailed design issues, such as: internals of accessible/ambulant toilet, fit-out, lift specification, slip resistant floor finishes, door schedules, hardware and controls, glazing, luminance contrast, stair nosing, TGSIs, handrail design, signage etc. that will be included in construction documentation.

3.4 Accessibility of Design

The proposed design will utilise the Federal Disability Discrimination Act (DDA), Disability (Access to Premises – Buildings) Standards 2010, BCA/DDA Access Code, Universal Design principles, the AS 1428 Series, and other design guidelines, to develop appropriate design documentation, to provide reasonable access provisions for people with disabilities.

The Project Architect and an appropriately qualified accessibility consultant will examine key physical elements during design development stage, to identify physical barriers and incorporate solutions as a suitable response to disability statutory regulations and other project objectives.

The design will be developed to ensure the principles of the DDA are upheld. Under the DDA, it is unlawful to discriminate against people with disabilities in the provision of appropriate access, where the approach or access to and within a premise, makes it impossible or unreasonably difficult for people with disabilities to make use of a particular service or amenity.



The design will comply with the requirements of the DDA Access to Premises Standards and include requirements for accessible buildings, linkages and the seamless integration of access provisions compliant with AS1428.1. The developed design will consider all user groups, who include members of the public, visitors, students and staff members.

3.5 Statutory Requirements

The statutory and regulatory guidelines to be encompassed in the developed design to ensure effective, appropriate and safe use by all people including those with disabilities will be in accordance with:

- Federal Disability Discrimination Act (DDA);
- Disability (Access to Premises – Buildings) Standards 2010;
- Building Code of Australia (BCA) Part D3, F2, E3;
- AS 1428.1:2009 - (General Requirement of Access);
- AS 1428.4.1:2009 - (Tactile Ground Surface Indicators);
- AS 2890.6:2009 - (Parking for People with Disabilities);
- AS 1735.12:1999 - (Lift Facilities for Persons with Disabilities);
- Liverpool City Council DCP Part 3

Please note that there are also additional advisory standards (not currently referenced by BCA or DDA Premises Standards) as well as other relevant guidelines that will be considered, as relevant to promote equity and dignity in line with over-arching DDA principles and aspirational objectives. These include:

- Universal Design Principles;
- Human Rights Commission (HEREOC)
- Advisory Note February 2013 on streetscape, public, outdoor areas, fixtures, fittings and furniture;
- AS1428.2:1992 Enhanced and Additional requirements;
- AS1428.4.1 Draft Way-finding Standard;
- AS3745:2010 – Planning for Emergencies in Facilities (to assist with design strategies for provision for escape for people with disability that may require assistance)



4. General Access Planning Considerations

The Disability Discrimination Act 1992 (DDA) is a legislative law that protects the rights of all people. The Act makes disability discrimination unlawful and promotes equal rights, equal opportunity and equal access for people with disabilities. The Australian Human Right Commission is the governing body who control and enforce DDA compliance.

Nevertheless, building elements that provide insufficient accessible provisions for people with disabilities remain subject to the DDA. The improvement of non-compliant building elements and areas to meet current access requirements will mitigate the risk of a DDA complaint be made against the building owner.

Since the 1st May 2011, the Commonwealth's Disability (Access to Premises – Buildings) Standards 2010 (DDA Premises Standards) apply to all new building works and to affected parts of existing buildings.

The DDA Premises Standards' requirements (DDA Access Code) are mirrored in the access provisions of the BCA. New building work and affected parts must comply with the DDA Premises Standards and AS1428.1-2009 in the same manner as they would comply with the BCA by meeting deemed-to-satisfy provisions or by adopting an alternative solution that achieves the relevant performance requirements.

By utilizing AS 1428 suite of Standards, the overall aim is to provide continuous accessible paths of travel to connect the proposed development to and through public domain areas and between associated accessible buildings in accordance with the DDA Access Code.

MGAC supports the use and consideration of universal design (UD) principles into the design to maximize access for all people. We will assist the design team to incorporate UD principles where possible within the project, while still meeting mandatory compliance requirements.

A UD approach has numerous benefits for the client as an education provider, for businesses within the building, for individual users and for society in general. An inclusive environment that can be accessed, understood and used by as many people as possible, is good business sense, is more sustainable and is socially progressive, in line with the aims of the DAP.

Universal design principles consider the needs of a broad range of people including older people, families with children and pushing prams, people from other cultures and language groups, visitors in transit and people with disability. By considering the diversity of users, the design will embed access into and within it, so that benefits can be maximized, without adding on specialized 'accessible' features that can be costly, visually unappealing and may perpetuate exclusion and potential stigma.

The seven key Universal design principles to consider in the on-going design include:

- Principle 1: Equitable Use
- Principle 2: Flexibility in Use
- Principle 3: Simple and Intuitive Use
- Principle 4: Perceptible Information



- Principle 5: Tolerance for Error
- Principle 6: Low Physical Effort
- Principle 7: Size and Space for Approach and use



5. Ingress & Egress

5.1 External Linkages

The BCA and DDA Premises Standards contain requirements for site approaches for the use of persons with disabilities. These requirements can be summarised as follows:

- It will be necessary to provide an accessible path of travel from main pedestrian entry points at the site allotment boundary to all building entrances compliant with AS1428.1:2009.
- An accessible path of travel between buildings (or parts of buildings) that are connected by a pedestrian linkage, within the site allotment boundary, compliant with AS1428.1:2009 is also required.
- An accessible path of travel to building entrances (required to be accessible) from associated accessible car-parking bays, compliant with AS1428.1:2009 is required.

Assessment

Arterial linkages have been provided from Macquarie, Scott and Terminus Street into the development. The linkages provide a link to the main entry door/s for each building compliant with BCA and AS1428.1.

MGAC has reviewed the drawings and documentation in relation to the aforementioned requirements. On the basis of the current level of detail all access requirements appear capable of achieving compliance.

Further work will be required during design development stage to ensure appropriate outcomes are achieved.

5.2 Entrances

The BCA and DDA Premises Standards contain requirements for building entry for the use of persons with disabilities. These requirements can be summarised as follows:

- Access is required through at least 50% of entrances, including the principal pedestrian entrance/s to all buildings or parts of buildings (ie. when they have a separate function and/or use eg. external retail tenancy). Note it is preferred that all entrances are accessible.
- A non-accessible entry cannot be located more than 50m distance from an accessible entry (for buildings greater than 500m²).
- All accessible doors to have 850mm min. clear width opening and suitable door circulation area, compliant with AS1428.1:2009. Note: Manual doors require lightweight door forces to be operable by people with disabilities (20N max.). We recommend that main entrances include automated sliding doors to be used where possible. Revolving doors are not accessible, if maintained an alternate accessible door is required adjacent.



- An accessible path of travel eg. ramp or lift needs to be provided adjacent (or in reasonable proximity) to any stair access. Note: providing choice of access route directly adjacent so that people can start and finish in the same location/travel similar route promotes inclusion and UD principles.

Assessment

All entrances into office, library and retail tenancies will have clear widths and turning spaces that will allow ample manoeuvrability for wheelchair users compliant with AS1428.1.

MGAC has reviewed the drawings and documentation in relation to the aforementioned requirements. On the basis of the current level of detail all access requirements appear capable of achieving compliance.

Further work will be required during design development stage to ensure appropriate outcomes are achieved.

5.3 Emergency Egress

BCA 2016 Part D2.17 has requirements for all fire-isolated egress stairs from areas required to be accessible (not communication stairs) to include at least one continuous handrail designed to be compliant with AS1428.1 Clause 12. Provision of an off-set tread at the base of stair flights or an extended mid-landing that will allow a 300mm extension clear of egress route is considered appropriate for achieving a consistent height handrail (without vertical or raked sections). Such an off-set tread configuration has been shown at the majority of stairs and would appear to be possible elsewhere, subject to further detail design.

Where fire-isolated egress stairs will also be used for communication stair purposes between levels, they should be designed to meet AS1428.1:2009. Confirmation is required on the likely use of certain stairs for this purpose.

There is currently no mandatory requirement within BCA or DDA Premises Standards for provision of independent accessible egress for people with a disability in accordance AS1428.1 and this remains an important DDA issue. Consideration of an accessible egress strategy with emergency evacuation plan will be needed as a minimum starting point.

Consideration of waiting spaces within fire-stairs should be strongly considered for people with mobility impairment. The current configuration of stairs suggests the spatial requirements would not be incorporated without layout amendments, but if provided with future design development these would generally require:

- 850mm min. clear width egress door and 510mm min. external door circulation area, compliant with AS1428.1:2009;
- Wheelchair space (800mm W x 1300mm L min. dimensions) within fire-isolated stair, outside of the required egress path, that can be accessed on a continuous path of travel.
- Alternative evacuation means eg. emergency passenger lift/s could be provided instead of/or only in addition to 'waiting spaces' in line with ABCB Handbook and/or



consideration of stair evacuation devices (with appropriate storage and staff training) within fire stairs.

Assessment

N/A



6. Paths of Travel

6.1 Circulation Areas

The BCA and DDA Premises Standards contain requirements for circulation areas for the use of persons with disabilities. These requirements can be summarised as follows:

- Wheelchair passing bays (1800mm width x 2000 length) are also required when a direct line of sight is not available and are to be provided at 20m max. intervals along access-ways.
- Turning spaces (at least 1540mm W x 2070mm L) are required within 2m of every corridor end and at 20m.max intervals along all access-ways. This is needed for wheelchairs to make a 180 degree turn, compliant with AS1428.1:2009.
- All common-use doors (ie. not excluded under Part D3.4) to have 850mm min. clear width opening (each active door leaf) and suitable door circulation area, compliant with AS1428.1:2009.
- All common-use corridors and accessible paths of travel to be at least 1000mm min. width when travelling in linear direction Note: Increased clear width paths of travel required for doorway circulation, turning areas etc.

Assessment

All arterial paths and internal corridors within the office, library and retail tenancies will have passing and turning spaces that will allow ample manoeuvrability for wheelchair user/s compliant with AS1428.1.

MGAC has reviewed the drawings and documentation in relation to the aforementioned requirements. On the basis of the current level of detail all access requirements appear capable of achieving compliance.

Further work will be required during design development stage to ensure appropriate outcomes are achieved.

6.2 Passenger Lifts

The BCA and DDA Premises Standards contain requirements for passenger lifts and circulation areas for the use of persons with disabilities. These requirements can be summarised as follows:

- Passenger lifts to have min. internal size at floor of 1400mm width x 1600mm depth, compliant with BCA/DDA Access Code Part E3.6 and AS1735.12.
- All lift lobbies and main corridors on each level to have 1800mm min. clear width to allow two wheelchairs ability to space pass each other.

Assessment



All lift lobbies have circulation spaces greater than 1800mm that will allow ample passing spaces and manoeuvrability for wheelchair users compliant with AS1428.1.

MGAC has reviewed the drawings and documentation in relation to the aforementioned requirements. On the basis of the current level of detail all access requirements appear capable of achieving compliance. Further work will be required during design development stage to ensure appropriate outcomes are achieved.

6.3 Stairs & Ramps

The BCA and DDA Premises Standards contain requirements for stairs and ramps for the use of persons with disabilities. These requirements can be summarised as follows:

- Ramps are to have maximum 1:14 gradient with landings at no more than 9 metre intervals
- Ramps are to have handrails on both sides with minimum 1 metre clearance in accordance with AS1428.1
- Landings are to have 1200mm length with 1500mm length at 90 degree turns
- Stairs are to have handrails on both sides in accordance with AS1428.1
- Stairs and ramps are to be offset to ensure no encroachment of handrail extensions into from transverse path of travel at top and bottom of stair/ramp

Assessment

MGAC has reviewed the drawings and documentation in relation to the aforementioned requirements. On the basis of the current level of detail all access requirements appear capable of achieving compliance subject to issues of non-compliant curved ramps identified on the attached drawings.

Further work will be required during design development stage to ensure appropriate outcomes are achieved.



7. Facilities & Amenities

7.1 Sanitary Facilities

The BCA and DDA Premises Standards contain requirements for sanitary facilities suitable for the use of persons with disabilities. These requirements can be summarised as follows:

- For Class 5, 6, 7a, 9b: Provide at least 1 unisex accessible toilet, adjacent to every bank of toilets (where provided) on each storey, compliant with AS1428.1 under BCA/DDA Access Code part F2.4. If more than 1 toilet bank provided on each level, accessible toilet is required at 50% min. of toilet banks at each level.
- For Class 9b: If common-use change facilities provided (ie. both toilets and showers) a separate combined accessible WC/shower adjacent to male and female change rooms is required, compliant with AS1428.1 under BCA/DDA Access Code Part F2.4.
- An even number of left hand (LH) and right hand (RH) transfer WC pans (accessible toilets) is required within the building. Alternating LH/RH layouts on each subsequent level is the most appropriate and inclusive approach.
- Accessible WC requires 2300mm x 1900mm around the pan with the basin to sit outside this area in accordance with AS1428.1.
- An ambulant cubicle is required within every standard toilet bank adjacent to an accessible toilet under DDA Access Code Part F2.4 compliant with AS1428.1:2009.

Assessment

MGAC has reviewed the drawings and documentation in relation to the aforementioned requirements. On the basis of the current level of detail all access requirements appear capable of achieving compliance subject to some issues with regards to the provisions of AWC facilities as identified on the attached drawings.

Further work will be required during design development stage to ensure appropriate outcomes are achieved.

7.2 Common Areas

The BCA and DDA Premises Standards contain requirements for common use areas suitable for the use of persons with disabilities. These requirements can be summarised as follows:

- Accessibility is required to common use courtyards within buildings
- Wheelchair access is required to any external and outdoor terrace areas including roof terraces compliant with AS1428.1.

Assessment

MGAC has reviewed the drawings and documentation in relation to the aforementioned requirements. On the basis of the current level of detail all access requirements appear capable of achieving compliance. Further work will be required during design development stage to ensure appropriate outcomes are achieved.



7.3 Car Parking

The BCA and DDA Premises Standards contain requirements for parking which are applicable to this project. These requirements can be summarised as follows:

- Class 5 commercial, 9b development: Provide 1 accessible car bay for every 100 car bays or part thereof, compliant with AS2890.6.
- Class 6 retail development: Provide 1 accessible car bay for every 50 car bays or part thereof, compliant with AS2890.6.
- Accessible car bays require 2.4 metre with 2.4 metre shared area.
- All accessible car bays to be located near relevant lifts and/or associated building entry points to minimise distance to relevant lift and ensure accessible path of travel between these areas.
- Ensure 2.5m min. height clearance, compliant with AS2890.6 fig 2.7 over accessible car bays with 2.2 m min. vertical clearance leading to the accessible and adaptable unit car bays (Note: consideration for 2.3 or 2.4m min. height preferred for higher vans/adapted vehicles is recommended as good practice).

Assessment

MGAC has reviewed the drawings and documentation in relation to the aforementioned requirements.

On the basis of the current level of detail all access requirements appear capable of achieving compliance subject to resolution of some minor issues in regard to provisions of accessible parking bays as identified on the attached drawings.

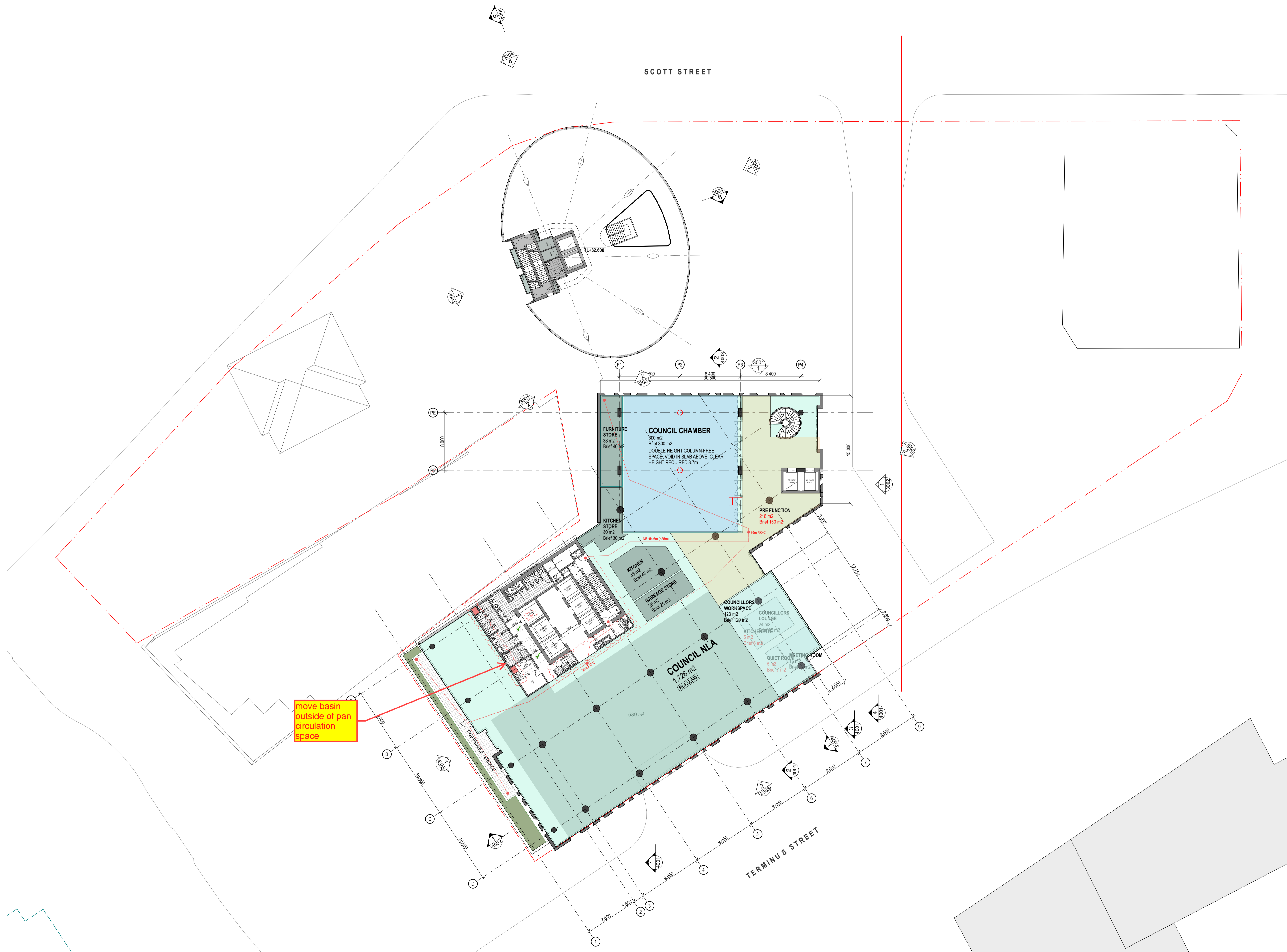
Further work will be required during design development stage to ensure appropriate outcomes are achieved.



8. Conclusion

MGAC has assessed the proposed scheme for the Liverpool Civic Place project. The proposed drawings indicate that accessibility requirements, pertaining to external site linkages, building access, common area access, sanitary facilities and parking can be readily achieved.

It is advised that MGAC will work with the project team as the scheme progresses to ensure appropriate outcomes are achieved in building design and external domain design.



C	7/7/20	ISSUED FOR COORDINATION	LB
B	5/6/20	ISSUED FOR COORDINATION	LB
A	16/5/20	ISSUED FOR COORDINATION	LB
rev	date	name	by

fynt studio architecture interiors landscape urban community
 sydney melbourne uk
 Level 5, 70 King Street • +61 2 9251 7077 • fyntstudio.com



project
LIVERPOOL CIVIC PLACE PROJECT
 52 SCOTT ST, LIVERPOOL
 SYDNEY NSW 2170

title
GA FLOOR PLANS
Level 01 Plan

scale 1:250 @ A1 (1:500 @ A3) first issued 15/5/20

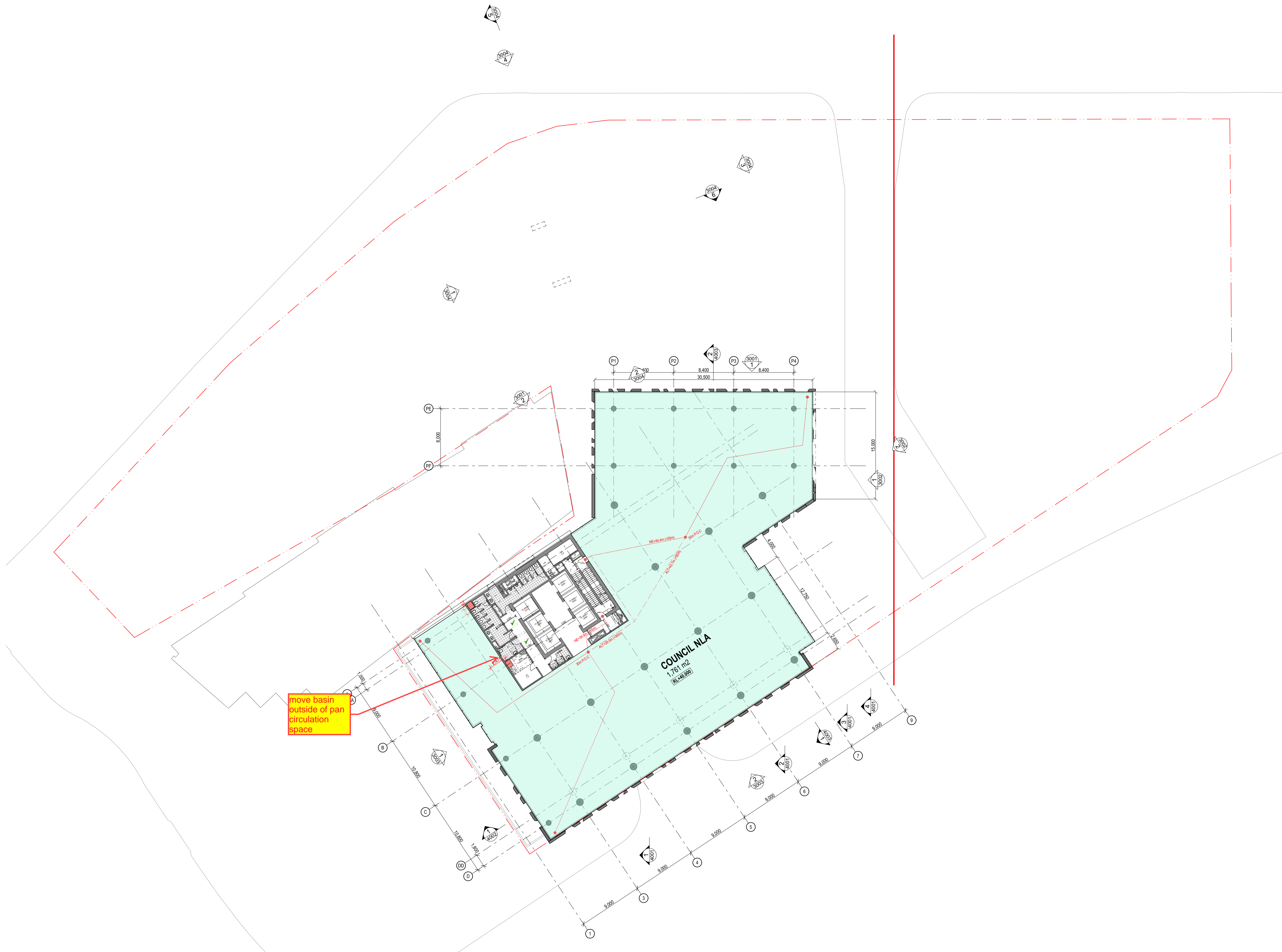
project code BLCP sheet no. SD-AR-2001 revision C

Work In Progress



GENERAL NOTES
 ALL DIMENSIONS AND EXISTING CONDITIONS
 SHALL BE CHECKED AND VERIFIED BY THE
 CONTRACTOR BEFORE PROCEEDING WITH THE WORK.
 ALL LEVELS RELATIVE TO AUSTRALIAN HEIGHT DATUM.
 DO NOT SCALE DRAWINGS.
 USE FIGURED DIMENSIONS ONLY.

legend



move basin
outside of pan
circulation
space

rev	date	name	by	chk
C	17/7/20	ISSUED FOR COORDINATION		LB
A	16/5/20	ISSUED FOR COORDINATION		LB

fjmt studio architecture interiors landscape urban community
 sydney melbourne uk
 Level 5, 70 King Street • +61 2 9251 7077 • fjmtstudio.com



project
LIVERPOOL CIVIC PLACE PROJECT
 52 SCOTT ST, LIVERPOOL
 SYDNEY NSW 2170

title
GA FLOOR PLANS
Level 03 Plan

scale 1:250 @ A1 (1:500 @ A3) first issued 15/5/20

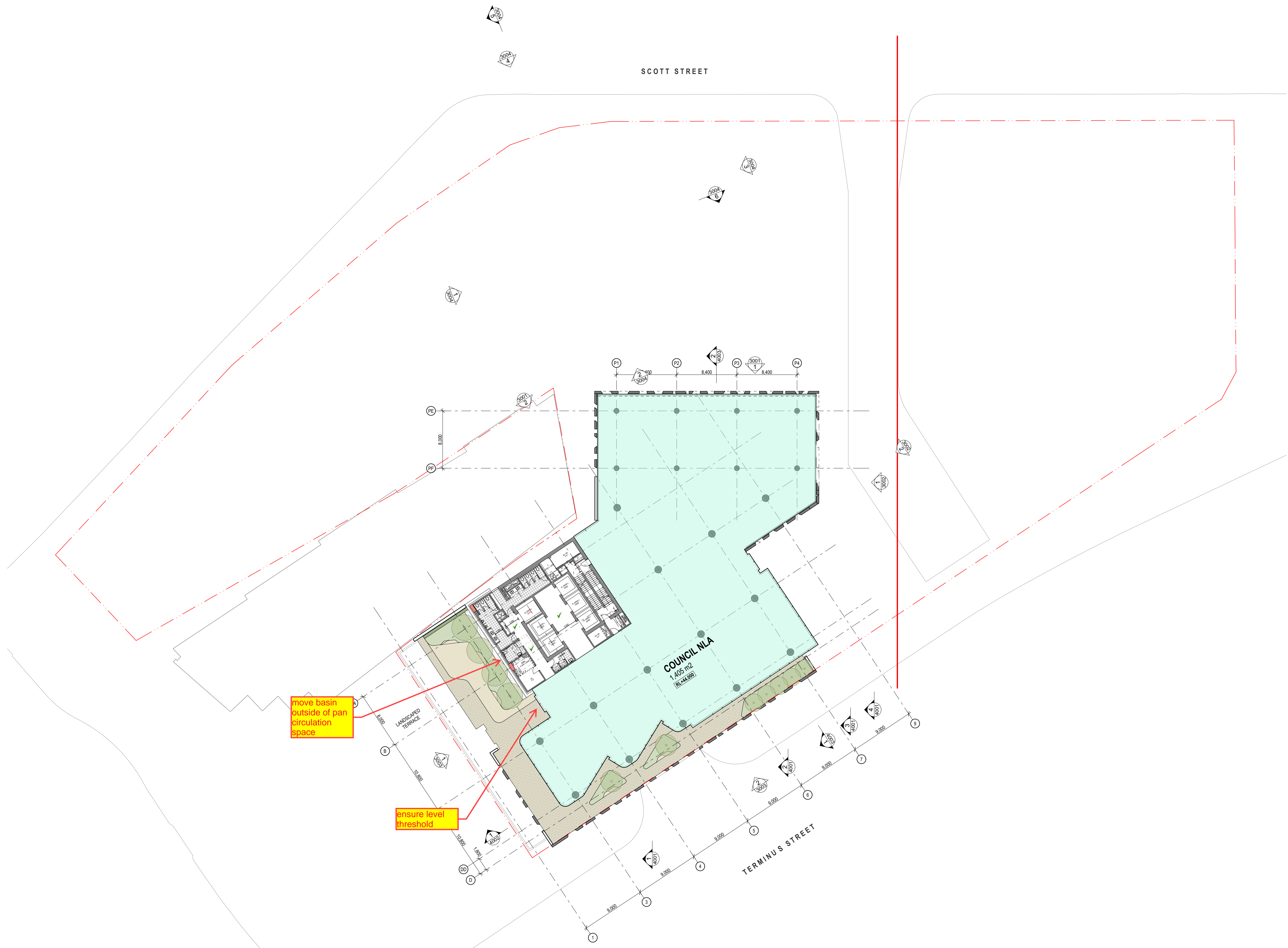
project code BLCP sheet no. SD-AR-2003 revision C

Work In Progress



GENERAL NOTES
 ALL DIMENSIONS AND EXISTING CONDITIONS SHALL BE CHECKED AND VERIFIED BY THE CONTRACTOR BEFORE PROCEEDING WITH THE WORK.
 ALL LEVELS RELATIVE TO AUSTRALIAN HEIGHT DATUM.
 DO NOT SCALE DRAWINGS.
 USE FIGURED DIMENSIONS ONLY.

legend



move basin outside of pan circulation space

ensure level threshold

C	17/7/20	ISSUED FOR COORDINATION	LB
A	16/5/20	ISSUED FOR COORDINATION	LB
rev	date	name	by chk

fjmt studio architecture interiors landscape urban community
 sydney melbourne uk
 Level 5, 70 King Street +61 2 9251 7077 www.fjmtstudio.com

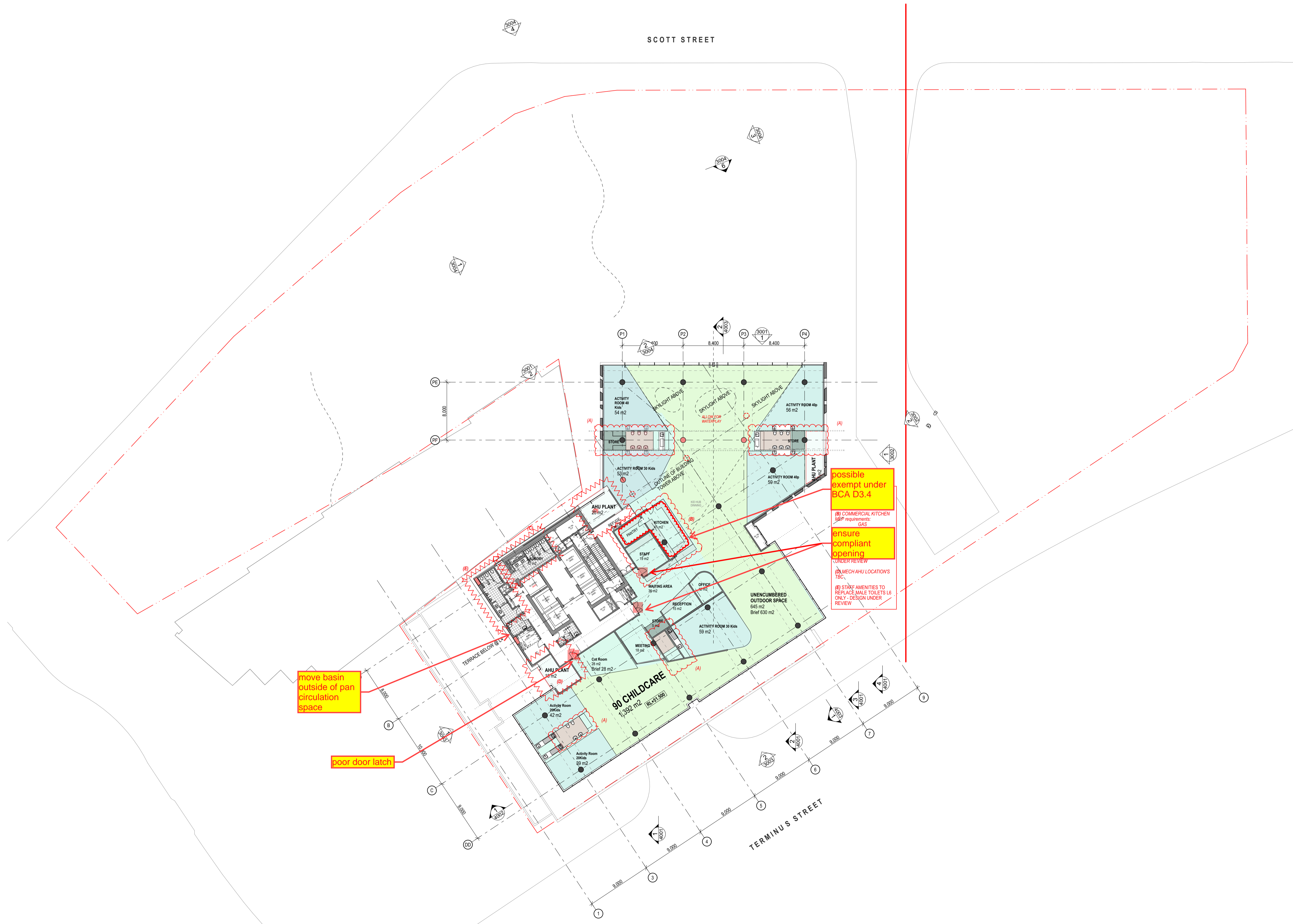
project
LIVERPOOL CIVIC PLACE PROJECT
 52 SCOTT ST, LIVERPOOL
 SYDNEY NSW 2170

title
GA FLOOR PLANS
Level 04 Plan Terrace

scale 1:250 @ A1 (1:500 @ A3) first issued 15/5/20

project code	sheet no.	revision
BLCP	SD-AR-2004	C

Work In Progress



possible exempt under BCA D3.4

(B) COMMERCIAL KITCHEN JSEP requirements GAS

ensure compliant opening UNDER REVIEW

(A) MECH AHU LOCATIONS TBC

(B) STAFF AMENITIES TO REPLACE MALE TOILETS L6 ONLY - DESIGN UNDER REVIEW

move basin outside of pan circulation space

poor door latch

rev	date	name	by	chk
C	17/20	ISSUED FOR COORDINATION		LB
A	16/5/20	ISSUED FOR COORDINATION		LB

fjmt studio architecture interiors landscape urban community
 sydney melbourne uk
 Level 5, 70 King Street • +61 2 9251 7077 • fjmtstudio.com

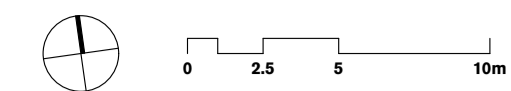
project
LIVERPOOL CIVIC PLACE PROJECT
 52 SCOTT ST, LIVERPOOL
 SYDNEY NSW 2170

title
GA FLOOR PLANS
Level 06 Plan Childcare

scale 1:250 @ A1 (1:500 @ A3) first issued 15/5/20

project code	sheet no.	revision
BLCP	SD-AR-2006	C

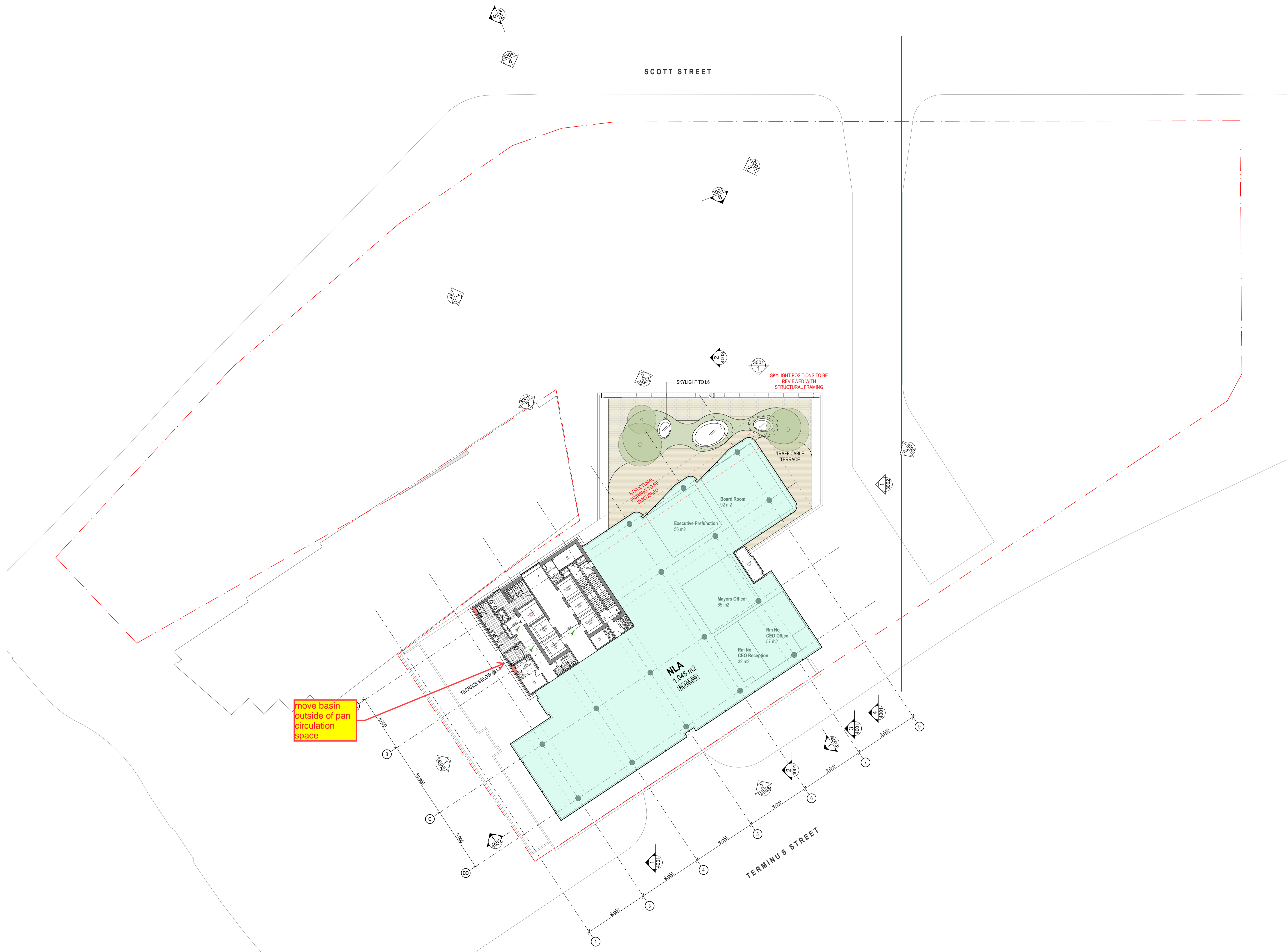
Work In Progress



GENERAL NOTES

- ALL DIMENSIONS AND EXISTING CONDITIONS SHALL BE CHECKED AND VERIFIED BY THE CONTRACTOR BEFORE PROCEEDING WITH THE WORK.
- ALL LEVELS RELATIVE TO AUSTRALIAN HEIGHT DATUM.
- DO NOT SCALE DRAWINGS.
- USE FIGURED DIMENSIONS ONLY.

legend



rev	date	name	by	chk
C	7/7/20	ISSUED FOR COORDINATION		LB
A	16/5/20	ISSUED FOR COORDINATION		LB

fjmt studio architecture interiors landscape urban community
 sydney melbourne uk
 Level 5, 70 King Street • +61 2 9251 7077 • fjmtstudio.com

project
LIVERPOOL CIVIC PLACE PROJECT
 52 SCOTT ST, LIVERPOOL
 SYDNEY NSW 2170

title
GA FLOOR PLANS
Level 07 Plan Executive Floor
Level 08 Plan (without terrace)

scale 1:250 @ A1 (1:500 @ A3) first issued 15/5/20

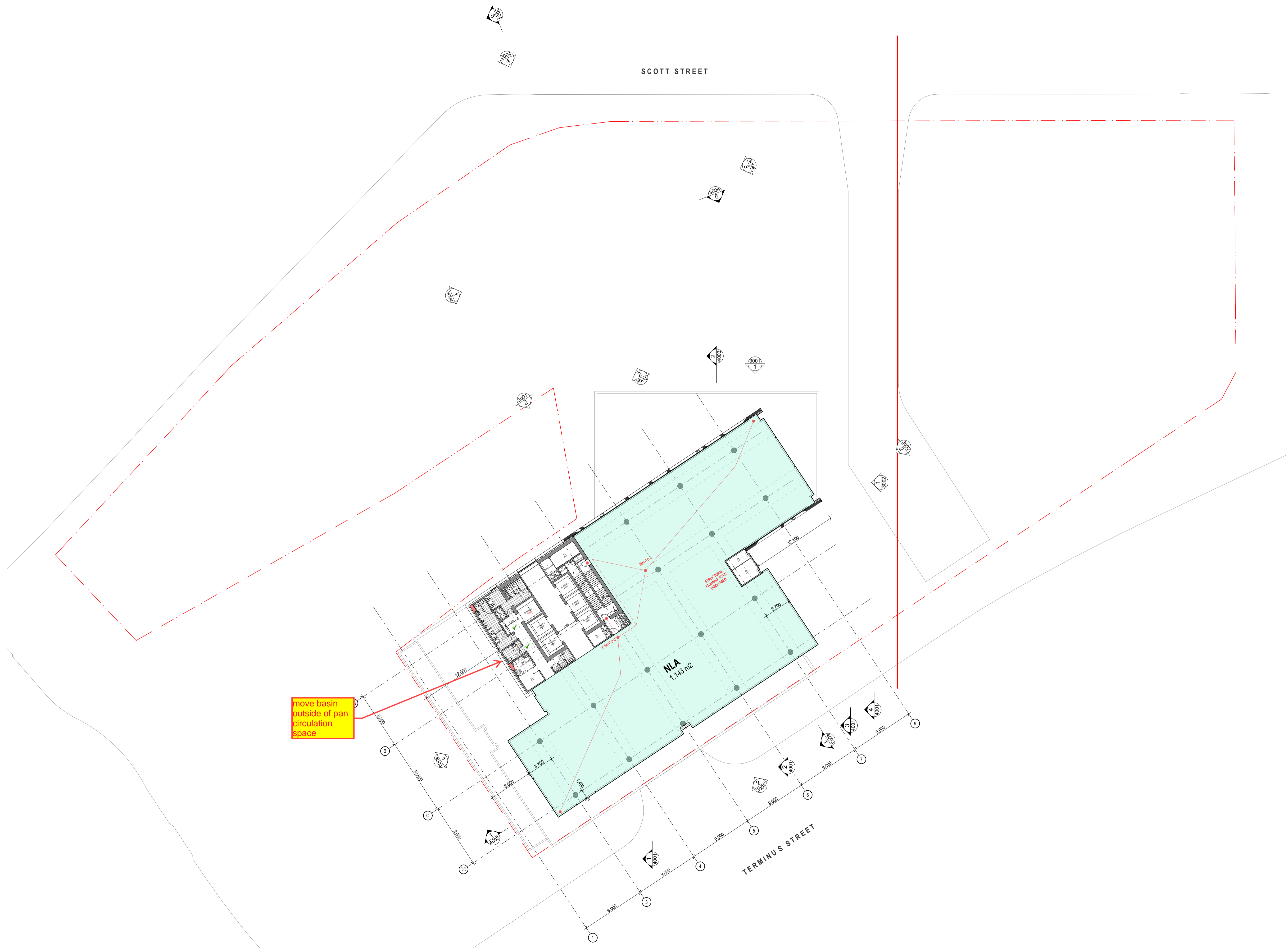
project code sheet no. revision
BLCP SD-AR-2007 C

Work In Progress



GENERAL NOTES
 ALL DIMENSIONS AND EXISTING CONDITIONS
 SHALL BE CHECKED AND VERIFIED BY THE
 CONTRACTOR BEFORE PROCEEDING WITH THE WORK.
 ALL LEVELS RELATIVE TO AUSTRALIAN HEIGHT DATUM.
 DO NOT SCALE DRAWINGS.
 USE FIGURED DIMENSIONS ONLY.

legend



move basin
outside of pan
circulation
space

rev	date	name	by	chk
C	7/7/20	ISSUED FOR COORDINATION		LB
A	16/5/20	ISSUED FOR COORDINATION		LB

fjmt studio architecture interiors landscape urban community
 sydney melbourne uk
 Level 5, 70 King Street • +61 2 9251 7077 • fjmtstudio.com

project
LIVERPOOL CIVIC PLACE PROJECT
 52 SCOTT ST, LIVERPOOL
 SYDNEY NSW 2170

title
GA FLOOR PLANS
Level 09-11 Typical Tower

scale 1:250 @ A1 (1:500 @ A3) first issued 15/5/20

project code	sheet no.	revision
BLCP	SD-AR-2008	C

Work In Progress



GENERAL NOTES
 ALL DIMENSIONS AND EXISTING CONDITIONS
 SHALL BE CHECKED AND VERIFIED BY THE
 CONTRACTOR BEFORE PROCEEDING WITH THE WORK.
 ALL LEVELS RELATIVE TO AUSTRALIAN HEIGHT DATUM.
 DO NOT SCALE DRAWINGS.
 USE FIGURED DIMENSIONS ONLY.

legend



rev	date	name	by	chk
C	7/7/20	ISSUED FOR COORDINATION		LB
A	16/5/20	ISSUED FOR COORDINATION		LB

fjmt studio architecture interiors landscape urban community
 sydney melbourne uk
 Level 5, 70 King Street • +61 2 9251 7077 • fjmtstudio.com



project
LIVERPOOL CIVIC PLACE PROJECT
 52 SCOTT ST, LIVERPOOL
 SYDNEY NSW 2170

title
GA FLOOR PLANS
Level 12 Plan Roof Plant 1

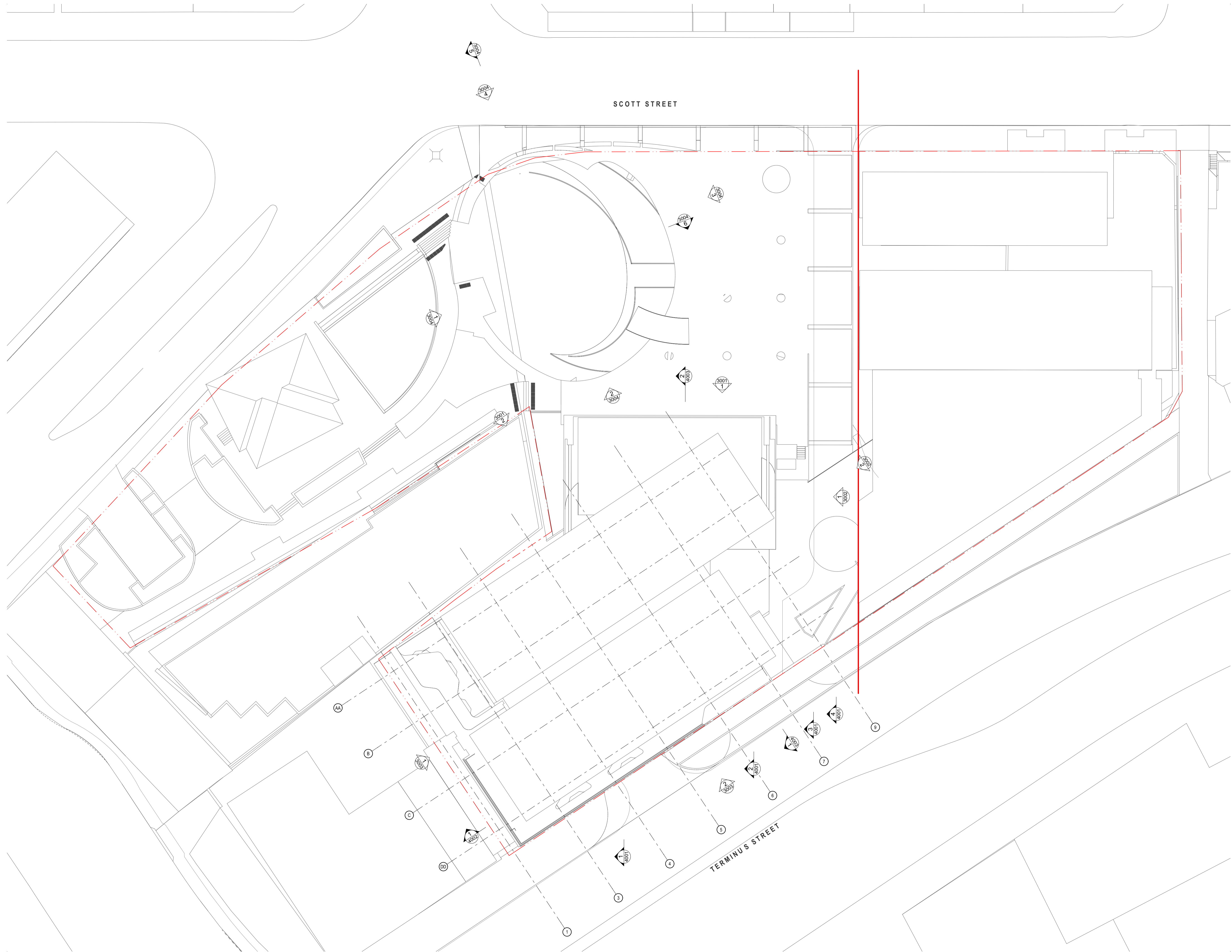
scale 1:250 @ A1 (1:500 @ A3) first issued 15/5/20

project code	sheet no.	revision
BLCP	SD-AR-2012	C

Work In Progress

GENERAL NOTES
○ ALL DIMENSIONS AND EXISTING CONDITIONS SHALL BE CHECKED AND VERIFIED BY THE CONTRACTOR BEFORE PROCEEDING WITH THE WORK.
○ ALL LEVELS RELATIVE TO AUSTRALIAN HEIGHT DATUM.
○ DO NOT SCALE DRAWINGS.
○ USE FIGURED DIMENSIONS ONLY.

legend



rev	date	name	by	chk
C	17/20	ISSUED FOR COORDINATION		LB
A	16/5/20	ISSUED FOR COORDINATION		LB

fjmt studio architecture interiors landscape urban community
sydney melbourne uk
Level 5, 70 King Street • +61 2 9251 7077 • fjmtstudio.com



project
LIVERPOOL CIVIC PLACE PROJECT
52 SCOTT ST, LIVERPOOL
SYDNEY NSW 2170

title
GA FLOOR PLANS
Roof Plan

scale 1:250 @ A1 (1:500 @ A3) first issued 15/5/20

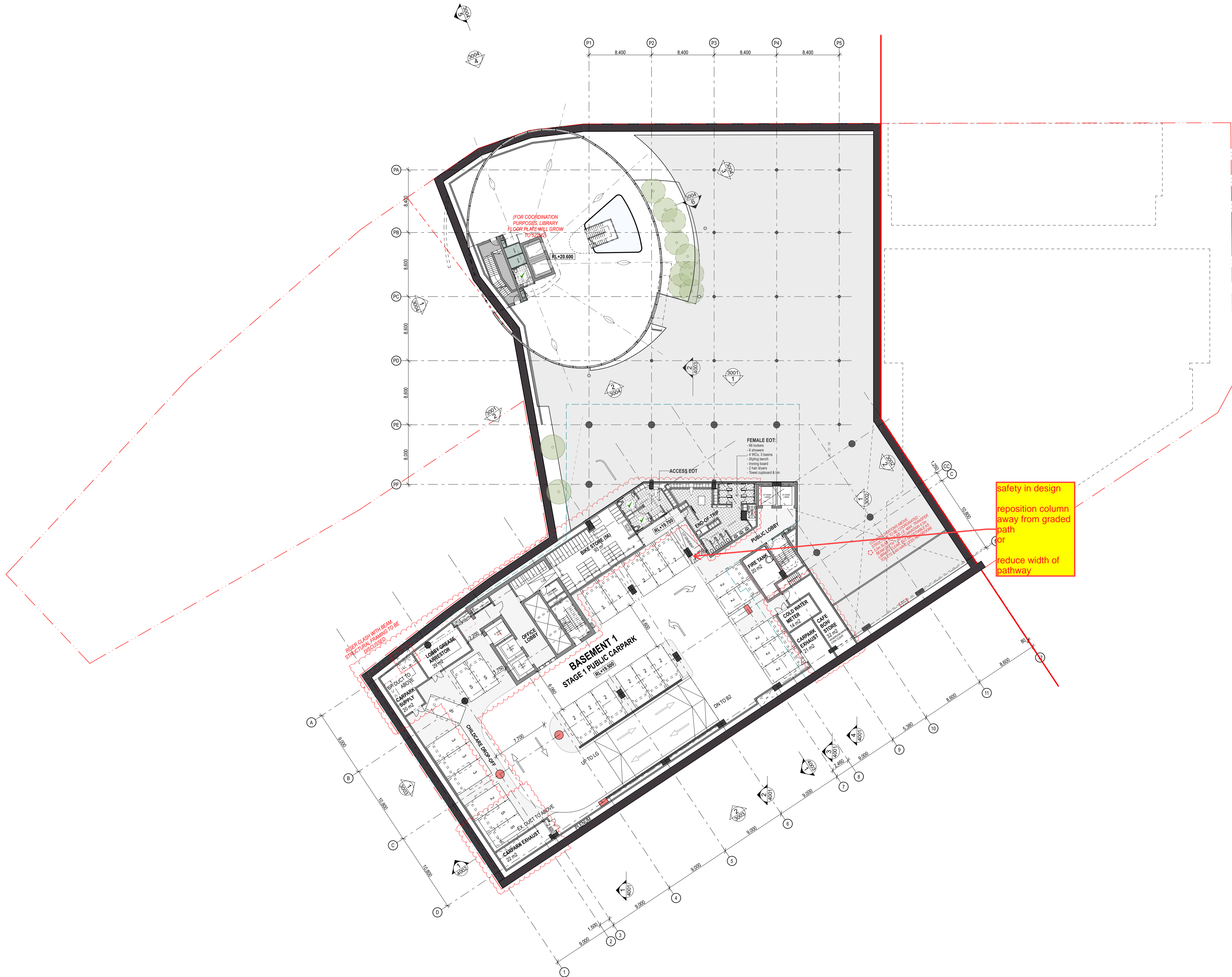
project code	sheet no.	revision
BLCP	SD-AR-2014	C

Work In Progress



GENERAL NOTES
 ALL DIMENSIONS AND EXISTING CONDITIONS SHALL BE CHECKED AND VERIFIED BY THE CONTRACTOR BEFORE PROCEEDING WITH THE WORK.
 ALL LEVELS RELATIVE TO AUSTRALIAN HEIGHT DATUM.
 DO NOT SCALE DRAWINGS.
 USE FIGURED DIMENSIONS ONLY.

Legend



safety in design
 reposition column away from graded path or
 reduce width of pathway

rev	date	name	by	chk
C	7/7/20	ISSUED FOR COORDINATION		LB
B	5/5/20	ISSUED FOR COORDINATION		LB
A	16/5/20	ISSUED FOR COORDINATION		LB

frst studio architecture interiors landscape urban community
 sydney melbourne uk
 Level 5, 70 King Street • +61 2 9251 7077 • frststudio.com



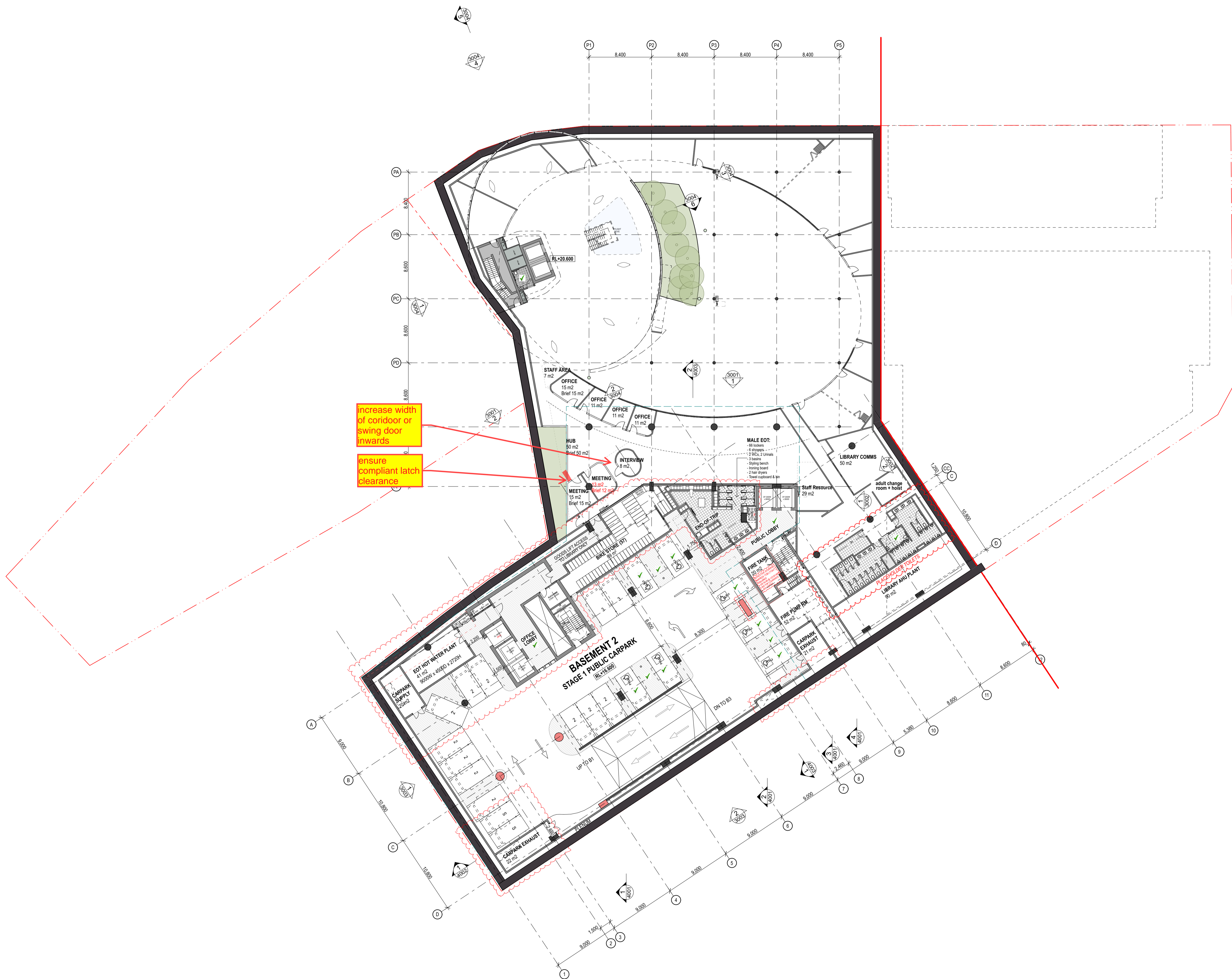
project
LIVERPOOL CIVIC PLACE PROJECT
 52 SCOTT ST, LIVERPOOL
 SYDNEY NSW 2170

title
GA FLOOR PLANS
Basement 01

scale 1:250 @ A1 (1:500 @ A3) first issued 15/5/20

project code sheet no. revision
BLCP SD-AR-20B1 C

Work In Progress



increase width of corridor or swing door inwards

ensure compliant latch clearance

rev	date	name	by	chk
C	7/7/20	ISSUED FOR COORDINATION		LB
B	5/5/20	ISSUED FOR COORDINATION		LB
A	16/5/20	ISSUED FOR COORDINATION		LB

frst studio architecture interiors landscape urban community
 sydney melbourne uk
 Level 5, 70 King Street • +61 2 9251 7077 • frststudio.com



project
LIVERPOOL CIVIC PLACE PROJECT
 52 SCOTT ST, LIVERPOOL
 SYDNEY NSW 2170

title
GA FLOOR PLANS
Basement 02

scale 1:250 @ A1 (1:500 @ A3) first issued 15/5/20

project code	sheet no.	revision
BLCP	SD-AR-20B2	C

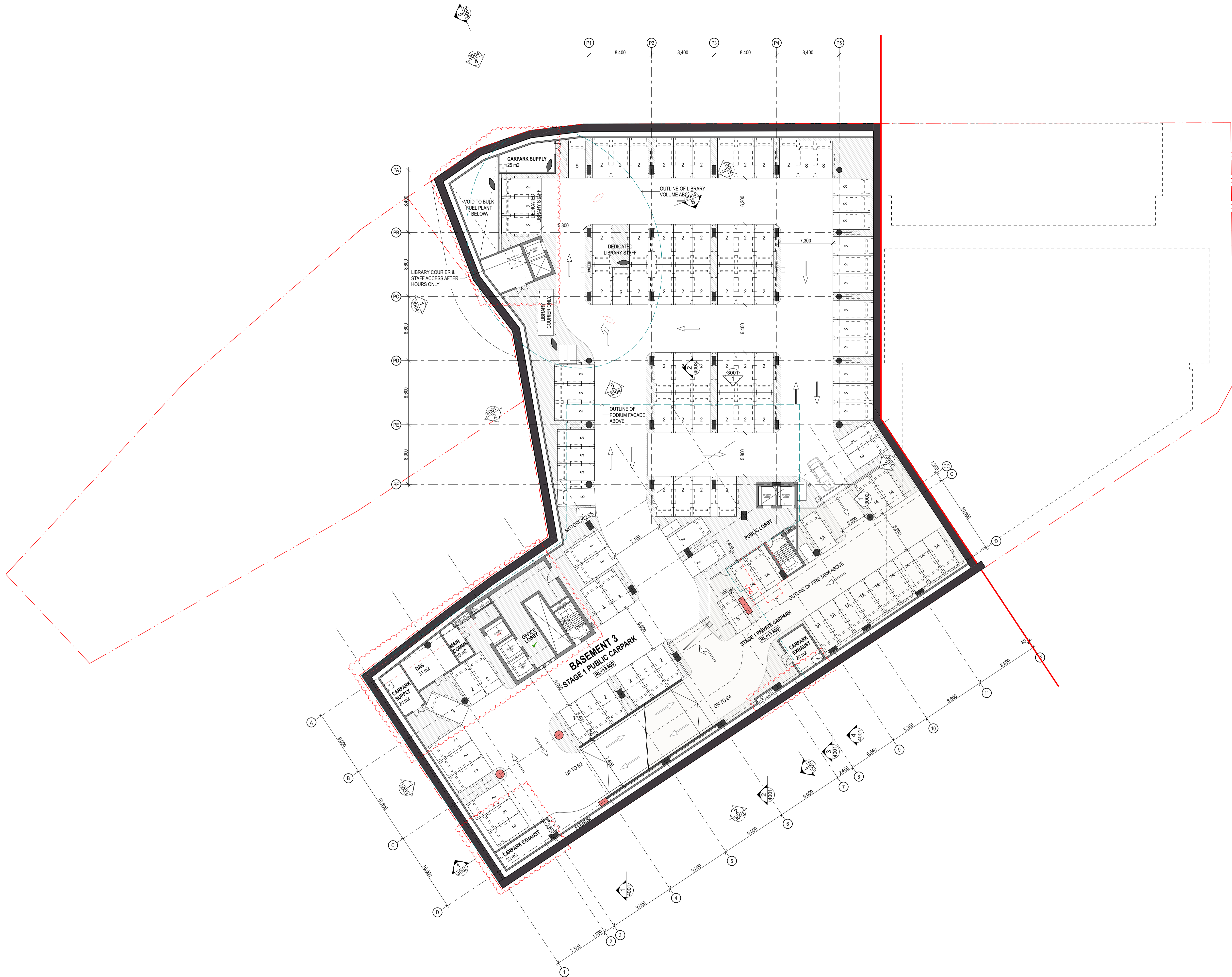
Work In Progress



GENERAL NOTES

- ALL DIMENSIONS AND EXISTING CONDITIONS SHALL BE CHECKED AND VERIFIED BY THE CONTRACTOR BEFORE PROCEEDING WITH THE WORK.
- ALL LEVELS RELATIVE TO AUSTRALIAN HEIGHT DATUM.
- DO NOT SCALE DRAWINGS.
- USE FIGURED DIMENSIONS ONLY.

Legend



rev	date	name	by	chk
C	7/7/20	ISSUED FOR COORDINATION		LB
B	5/5/20	ISSUED FOR COORDINATION		LB
A	16/5/20	ISSUED FOR COORDINATION		LB

frst studio architecture interiors landscape urban community
 sydney melbourne uk
 Level 5, 70 King Street • +61 2 9251 7077 • frststudio.com



project
LIVERPOOL CIVIC PLACE PROJECT
 52 SCOTT ST, LIVERPOOL
 SYDNEY NSW 2170

title
GA FLOOR PLANS
Basement 03

scale 1:250 @ A1 (1:500 @ A3) frst issued 15/5/20

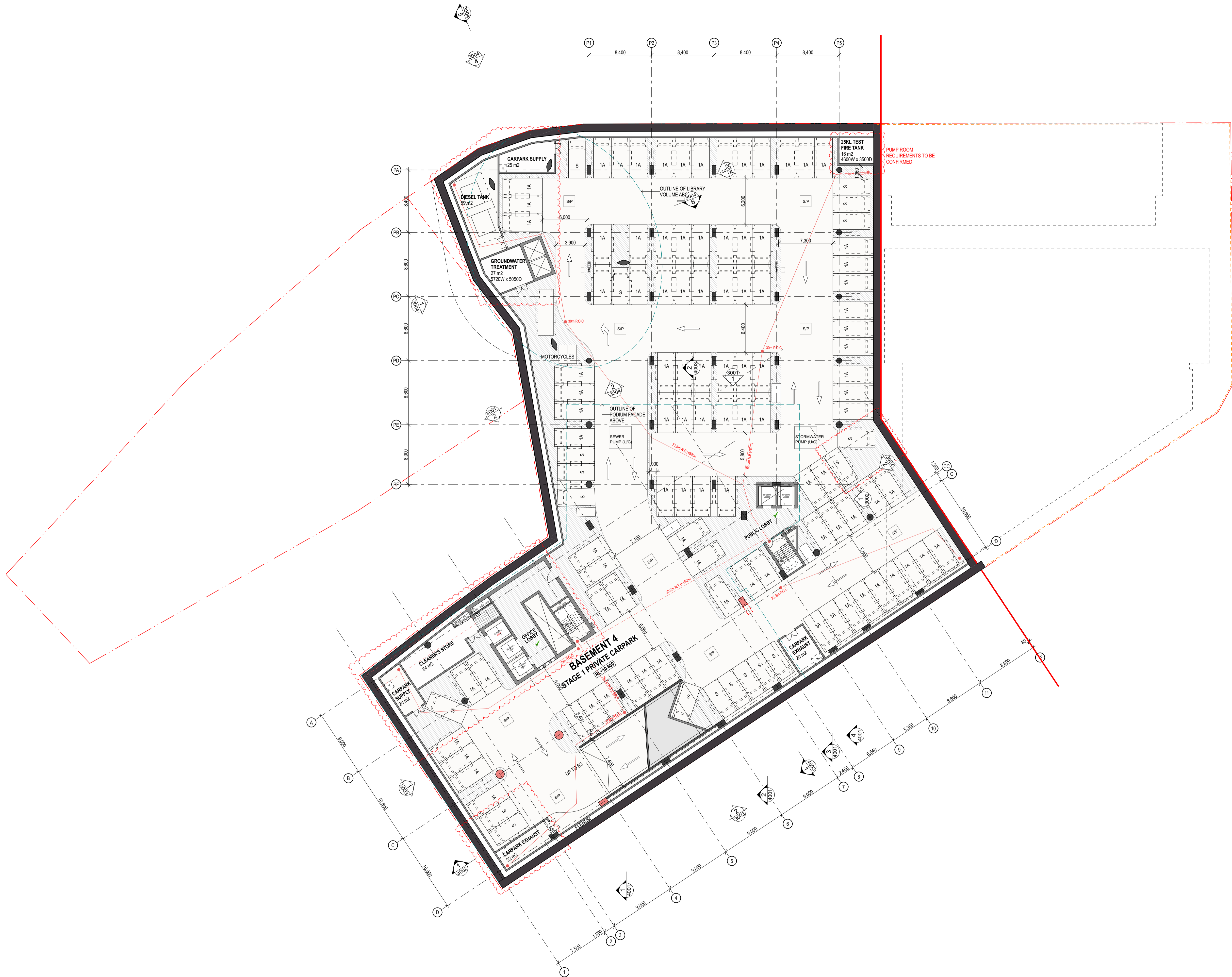
project code	sheet no.	revision
BLCP	SD-AR-20B3	C

Work In Progress



GENERAL NOTES
 ALL DIMENSIONS AND EXISTING CONDITIONS SHALL BE CHECKED AND VERIFIED BY THE CONTRACTOR BEFORE PROCEEDING WITH THE WORK.
 ALL LEVELS RELATIVE TO AUSTRALIAN HEIGHT DATUM.
 DO NOT SCALE DRAWINGS.
 USE FIGURED DIMENSIONS ONLY.

Legend



rev	date	name	by	chk
C	7/7/20	ISSUED FOR COORDINATION		LB
B	5/5/20	ISSUED FOR COORDINATION		LB
A	16/5/20	ISSUED FOR COORDINATION		LB

first studio architecture interiors landscape urban community
 sydney melbourne us
 Level 5, 70 King Street • +61 2 9251 7077 • firststudio.com



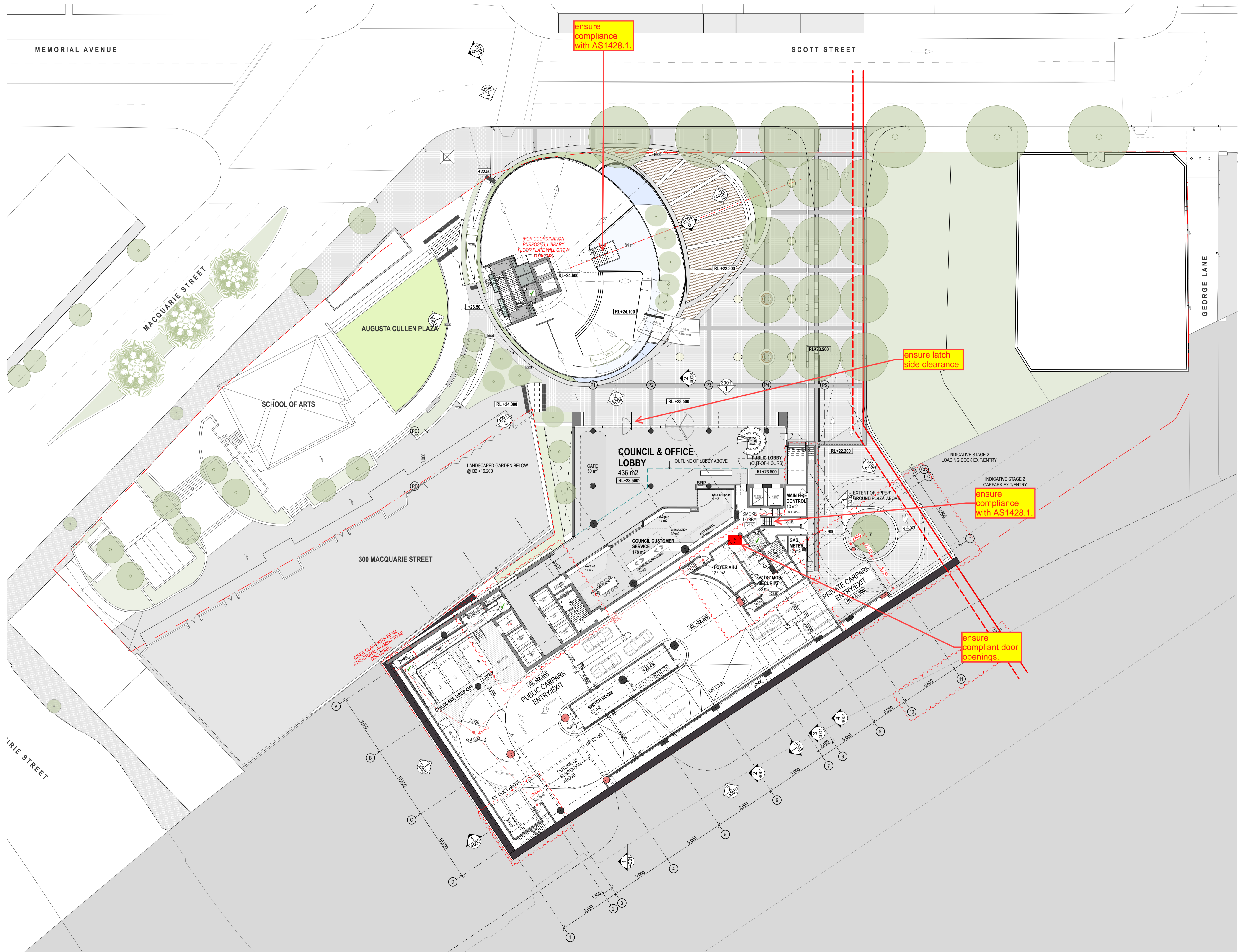
project
LIVERPOOL CIVIC PLACE PROJECT
 52 SCOTT ST, LIVERPOOL
 SYDNEY NSW 2170

title
GA FLOOR PLANS
Basement 04

scale 1:250 @ A1 (1:500 @ A3) first issued 15/5/20

project code sheet no. revision
BLCP SD-AR-20B4 C

Work In Progress



ensure compliance with AS1428.1.

ensure latch side clearance

ensure compliance with AS1428.1.

ensure compliant door openings.

RISE CLASH WITH BEAM STRUCTURAL FRAMING TO BE DISCUSSED

(FOR COORDINATION PURPOSES LIBRARY FLOOR PLATE WILL GROW TO 180M²)

rev	date	name	by	chk
C	7/7/20	ISSUED FOR COORDINATION	LB	
B	5/6/20	ISSUED FOR COORDINATION	LB	
A	16/5/20	ISSUED FOR COORDINATION	LB	

first studio architecture interiors landscape urban community
 sydney melbourne us
 Level 5, 70 King Street • +61 2 9251 7077 • firststudio.com



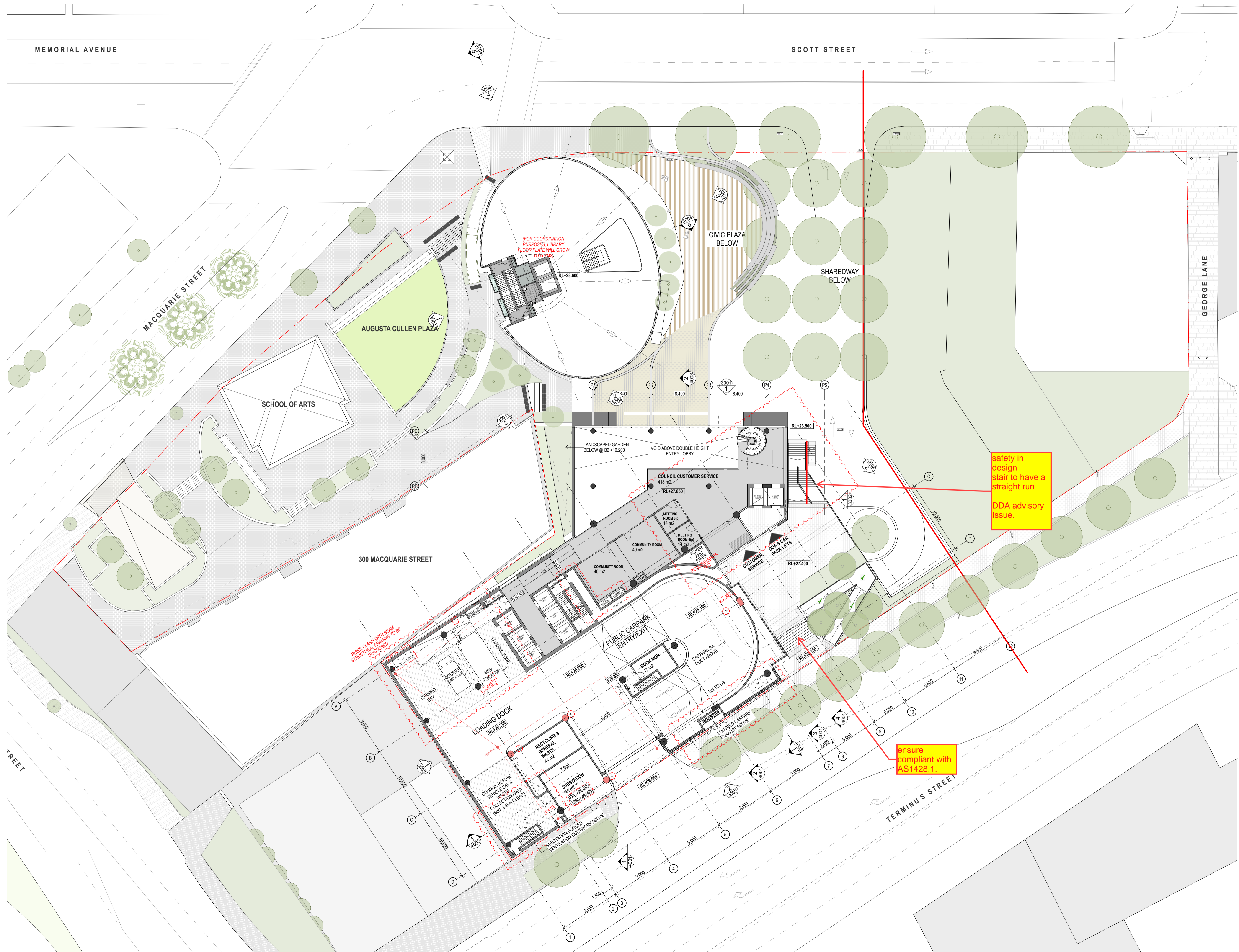
project
LIVERPOOL CIVIC PLACE PROJECT
 52 SCOTT ST, LIVERPOOL
 SYDNEY NSW 2170

title
GA FLOOR PLANS
 Lower Ground Floor Plan

scale 1:250 @ A1 (1:500 @ A3) first issued 15/5/20

project code sheet no. revision
BLCP SD-AR-20LG C

Work In Progress



rev	date	name	by	chk
C	7/7/20	ISSUED FOR COORDINATION		LB
B	5/6/20	ISSUED FOR COORDINATION		LB
A	16/5/20	ISSUED FOR COORDINATION		LB

first studio architecture interiors landscape urban community
 sydney melbourne uk
 Level 5, 70 King Street +61 2 9251 7077 www.firststudio.com

project
LIVERPOOL CIVIC PLACE PROJECT
 52 SCOTT ST, LIVERPOOL
 SYDNEY NSW 2170

title
GA FLOOR PLANS
 Upper Ground Floor Plan

scale 1:250 @ A1 (1:500 @ A3) first issued 15/5/20

project code BLCP sheet no. SD-AR-20UG revision C

Work In Progress